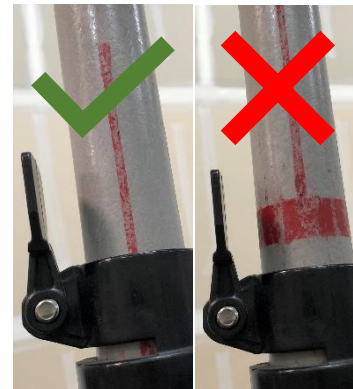


Quick Start Guide – Mast

Deploying the Mast

1. Make sure the two Mast Mounting Clamps are tight.
2. If guying mast, do so now.
3. Securely attach antennas to mast top.
4. Undo the top mast lock and use your hands to extend the smallest diameter pole.
5. Pivot the locking lever back down to secure the extended section of the mast.
6. Repeat step 3 for the rest of the sections, as needed.
 - a. DO NOT overextend the mast poles!
 - b. There are red lines to show you are close to the end of the pole.
 - c. The Mast should not ever be extended to a point that the Red Ring is showing on the pole. The red ring must be below the cutout for the clamp.



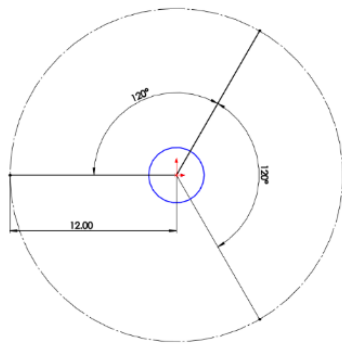
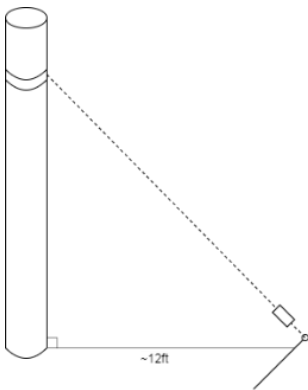
Guying the Mast

1. Retrieve the three Mast Guy Line Stakes.
2. Find three spots about 12' from the Mast. They should be roughly 120° apart.
3. Drive the stakes into the ground at a ~45° angle, away from the Mast.
4. Slide Guy Ring around mast.
5. Obtain the Guy Cables from the Drawer inside the Enclosure.
6. Attach an end to one of the three points on the Guy Ring.
7. Hook a Rope Tensioner to each Stake and pull a line of Rope through, leaving it loose to extend the Mast.
8. Extend the Mast, as necessary.
9. Once the Mast is extended, pull the excess further through the Easy-Tensioner to make the Guy Cables Taught.
 - a. The Mast should not be angled.
 - b. After tensioning the Guy Cables, securely fasten excess.

Rope Tensioning Fitting



Pull the rope through as shown to tension



Guy Rope Knot

The recommended knot for guy ropes is the Figure Eight on a Bight, as shown

